

OPTION 1
SEE "AIR VENT
ASSEMBLY" WS_03
(NOTE CONNECTION
BETWEEN CASING AND
CARRIER PIPE)

OPTION 2
2" STAINLESS
STEEL PIPE

2" BRASS
PIPE
1" PRE-MOLDED
FIBER CAULKING
BETWEEN PIPE
AND BRICK

Ø DRAINAGE
DITCH

STEEL CASING
(FOR LENGTH SEE
CONTRACT DOCUMENTS)

FINISH
GRADE

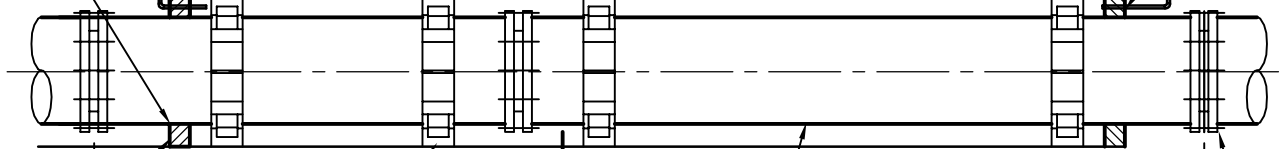
Ø DRAINAGE
DITCH

12"

BIRD
SCREEN

SEE NOTE 4

BRICK AND MORTAR
CAP 4" MIN. THICKNESS



NEOPRENE
END SEAL OR 8"
BRICK TO SEAL
ANNULAR SPACE
AT CASING ENDS. IF
BRICK, COAT
SURFACE WITH
BITUMASTIC

2'-0" 6"

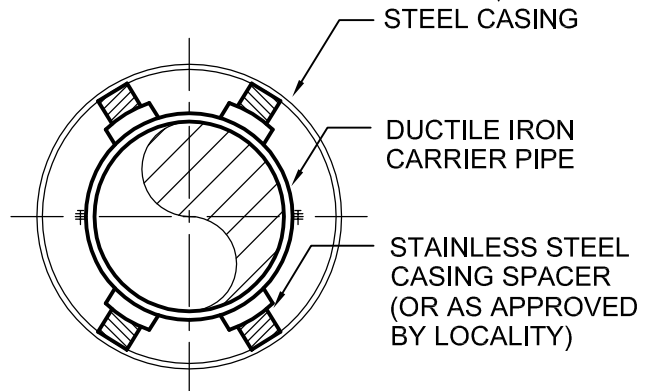
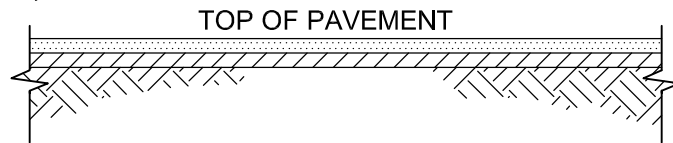
STAINLESS STEEL
CASING SPACER
(OR AS APPROVED
BY LOCALITY)

SECTION

DUCTILE IRON
CARRIER PIPE

RESTRAINED
MECHANICAL
JOINT (TYP)

6" 2'-0"



SECTION A-A

SEE WS_04, SHEET 2 OF 2 FOR NOTES.

STEEL CASING DETAIL

NOT TO SCALE

REFERENCE 200,801-804	CATEGORY WATER & SANITARY	DATE 6/16	SHEET No. 1 OF 2	DETAIL No. WS_04
--------------------------	------------------------------	--------------	---------------------	---------------------

STEEL CASING PIPE SELECTION CHART

DUCTILE IRON PIPE SIZE	4"	6"	8"	12"	16"	24"	30"	36"
STEEL CASING PIPE SIZE (O.D.)	12"	18"	18"	24"	30"	42"	48"	54"

NOTES:

1. ALL JOINTS INSIDE OF CASING PIPE AND ONE JOINT BEYOND SHALL BE RESTRAINED MECHANICAL JOINTS OR AS APPROVED BY LOCALITY.
2. INSTALL CASING PIPE AS SHOWN ON DRAWINGS OR MIN. 5 FT. BEYOND EDGE OF PAVEMENT.
3. STAINLESS STEEL SPACERS
 SPACERS SHALL BE BOLT-ON STYLE WITH A TWO PIECE SHELL MADE FROM T-304 STAINLESS STEEL OF A MINIMUM 14 GAUGE THICKNESS. THE SHELL SHALL BE LINED WITH A RIBBED PVC SHEET OF A 0.090" THICKNESS THAT OVERLAPS THE EDGES. RUNNERS MADE FROM UHMW POLYMER, SHALL BE ATTACHED TO RISERS AT APPROPRIATE POSITIONS TO PROPERLY LOCATE THE CARRIER WITHIN THE CASING AND TO EASE INSTALLATION. RISERS TO BE MADE FROM T-304 STAINLESS STEEL OF A MINIMUM 14 GAUGE THICKNESS AND SHALL BE ATTACHED TO THE SHELL BY MIG WELDING. ALL WELDS SHALL BE FULLY PASSIVATED. ALL FASTENERS SHALL BE MADE FROM T-304 STAINLESS STEEL. CASING SPACERS SHALL BE MODEL CCS AS MANUFACTURED BY CASCADE WATERWORKS MANUFACTURING COMPANY OF YORKVILLE, IL., MODEL SSI AS MANUFACTURED BY ADVANCE PRODUCTS & SYSTEMS, INC. OF LAFAYETTE, LA., OR APPROVED EQUAL.
4. SPACER WIDTH AND PLACEMENT INTERVALS
 IN ALL INSTANCES SPACER SHOULD BE PLACED TO SUPPORT THE CARRIER WITHIN TWO FEET OF THE END OF EACH PIPE JOINT. CONSULT SPACER MANUFACTURER FOR RECOMMENDATIONS ON SPACER WIDTH AND ADDITIONAL PLACEMENT INTERVALS.

STEEL CASING DETAIL

NOT TO SCALE

REFERENCE 200,801-804	CATEGORY WATER & SANITARY	DATE 6/16	SHEET No. 2 OF 2	DETAIL No. WS_04
--------------------------	------------------------------	--------------	---------------------	---------------------