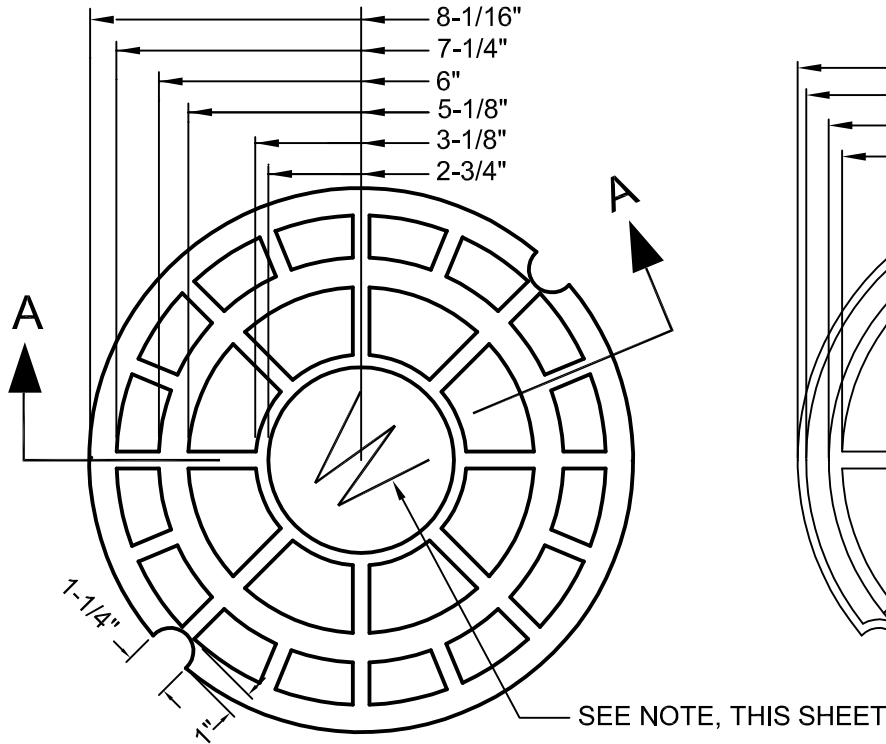
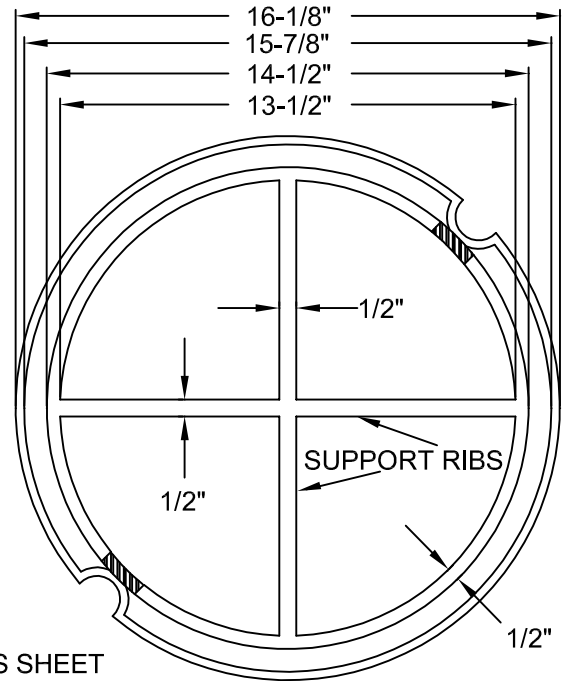


NOTE:

MARK WITH A "W" FOR WATER DISTRIBUTION SYSTEMS OR "S" FOR SANITARY SYSTEMS. TOP & BOTTOM OF LETTER DESIGNATION TO BE IN LINE WITH NOTCHES.

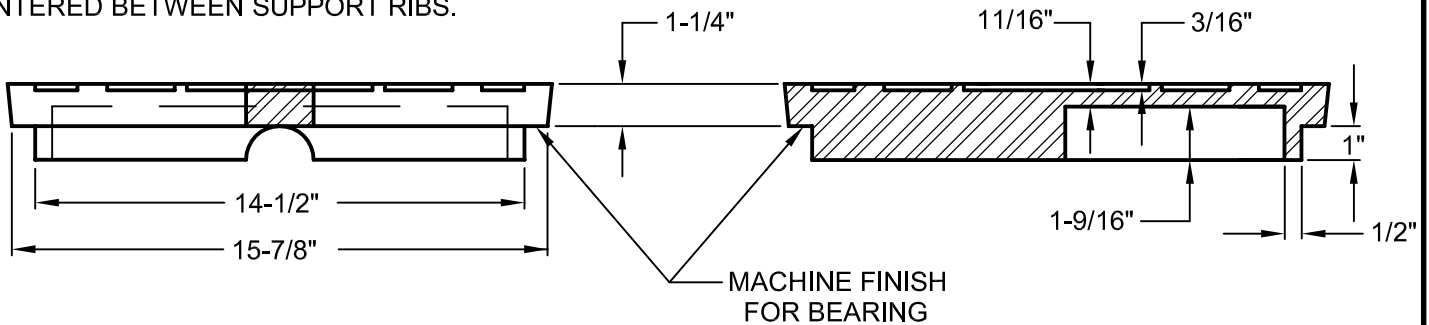


COVER: TOP



COVER: BOTTOM

BOTTOM SUPPORT RING TO BE NOTCHED DIRECTLY UNDER PICK HOLE ON BOTH SIDES. NOTCHES TO BE CENTERED BETWEEN SUPPORT RIBS.



SIDE VIEW

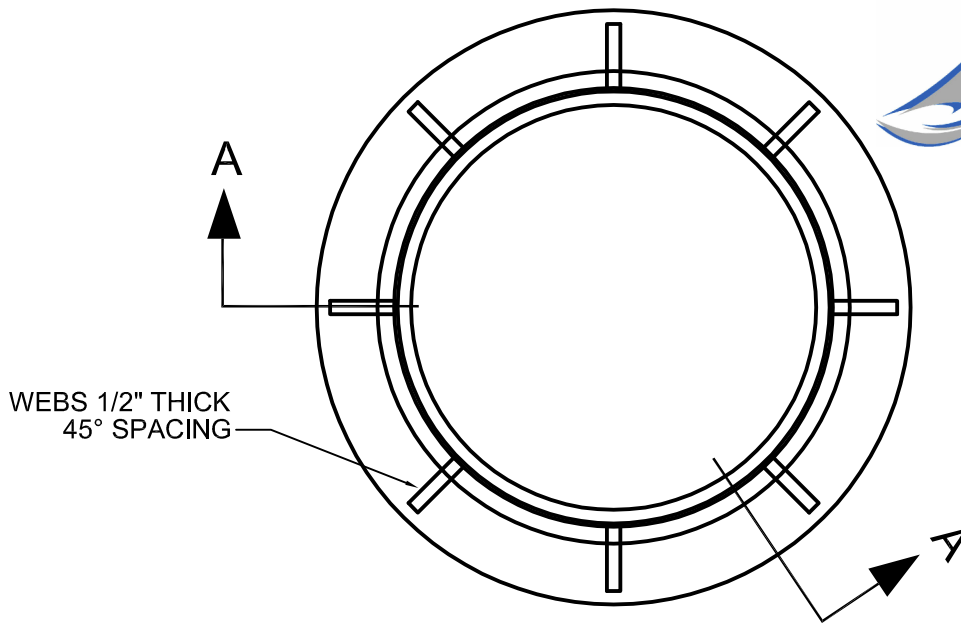
SECTION A-A

SEE WS_01, SHEET 2 OF 2 FOR NOTES & FRAME DETAILS.

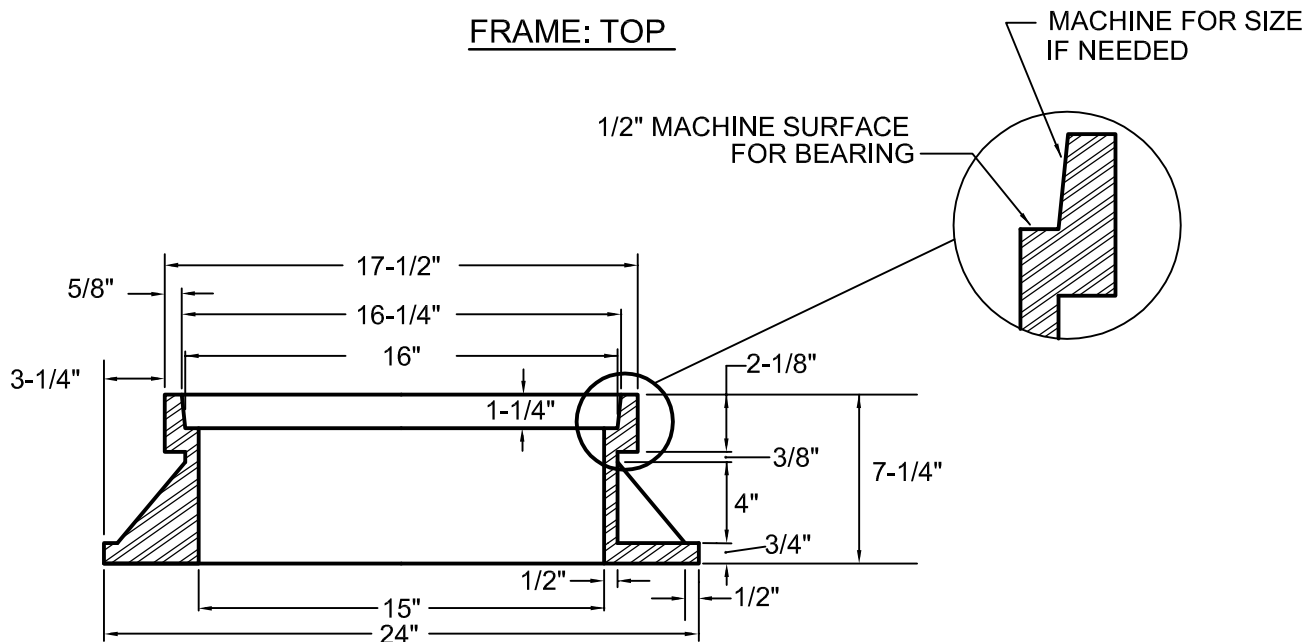
STANDARD VALVE BOX FRAME AND COVER

NOT TO SCALE

REFERENCE 200,801,803	CATEGORY WATER & SANITARY	DATE 6/16	SHEET No. 1 OF 2	DETAIL No. WS_01
--------------------------	------------------------------	--------------	---------------------	---------------------



FRAME: TOP



SECTION A-A

NOTES:

1. VALVE BOX FRAME AND COVER TO BE SUPPLIED BY CAPITAL FOUNDRY OF VIRGINIA, INC., MODEL #NPN-15*N, 160 LBS., OR APPROVED EQUAL.
2. ALL GRAY IRON CASTINGS SHALL CONFORM TO LATEST EDITION OF ASTM A-48, CLASS 30 AND SHALL BE OF UNIFORM QUALITY.
3. ALL CASTING DIMENSIONS SHALL HAVE A TOLERANCE OF 1/8"±.
4. ALL CASTINGS SHALL BE CLEANED BY SHOT BLASTING AND HAND CHIPPING UTILIZING STANDARD INDUSTRY PRACTICES PRIOR TO SHOP APPLICATION OF ASPHALTIC COATING, BY DIPPING.

STANDARD VALVE BOX FRAME AND COVER

NOT TO SCALE

REFERENCE 200,801,803	CATEGORY WATER & SANITARY	DATE 6/16	SHEET No. 2 OF 2	DETAIL No. WS_01
--------------------------	------------------------------	--------------	---------------------	---------------------